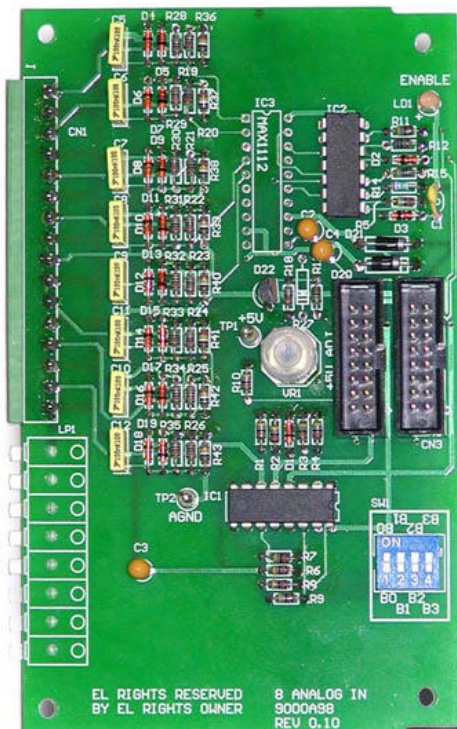


ARGUS FIELD UNIT, COMPONENT SPECIFICATIONS

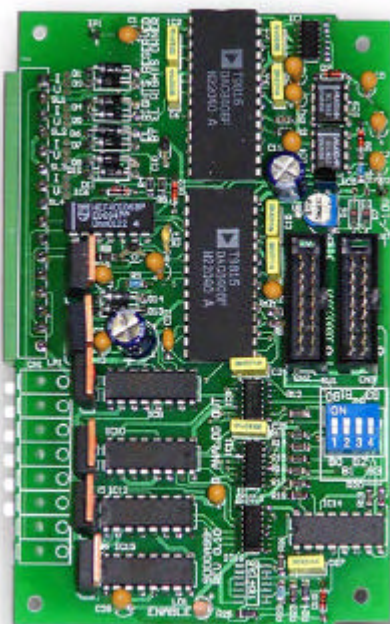


9000/44(A, B or C) Analog Input Card

Overview:- The 9000/44 provides 8 additional, 8 bit analogue inputs for the ARGUS RTU. The 'A', 'B' and 'C' variants offer the three industry standard input levels, namely 0-5V, 0-10V and 4-20mA. The extender module, (9000/30), can accommodate 2 of these input cards thus giving the field unit the capability of monitoring up to 20 analog inputs.

Specifications:-

- **9000/44A** version, 8 channels with 0-5VDC input
- Input load, 100k ohm/channel
- **9000/44B** version, 8 channels with 0-10VDC input
- Input load, 20k ohm/channel
- **9000/44C** version, 8 channels with 4-20mA input
- Input load, 240 ohm/channel
- Resolution, 8 bits (256 steps)
- Step size, 0.4% min
- Accuracy, +/- 1%
- Operating temperature, 0-60Deg C @ 95 % RH
- Current consumption, 10mA
- Dimensions, 80 x 150mm



9000/54(A, B or C) Analog Output Card

Overview:- This card provides 8 analog outputs for the ARGUS RTU by using the 9000/30 extender module. The three industry standards are offered, i.e., 0-5V, 0-10V and 4-20mA. By installing 2 cards in the extender module, up to 20 analog outputs can be supported by the ARGUS field unit.

Specifications:-

- **9000/54A** version, 8 output channels at 0-5V
- **9000/54B** version, 8 output channels at 0-10V
- **9000/54C** version, 8 output channels at 4-20mA
- Resolution, 8 bit (256 steps)
- Accuracy, +/- 1%
- Power consumption, minimum of 30 mA
- Operating temperature, 0-60 deg C @ 95% RH
- Dimensions, 80x 150mm